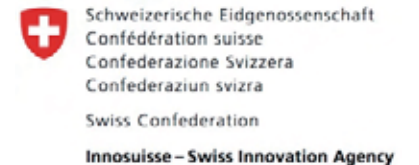


# Swiss Competence Center for Energy Research Future Energy Efficient Buildings & Districts Dezentralisierung der Energieversorgung – Quartier als Energie Hub

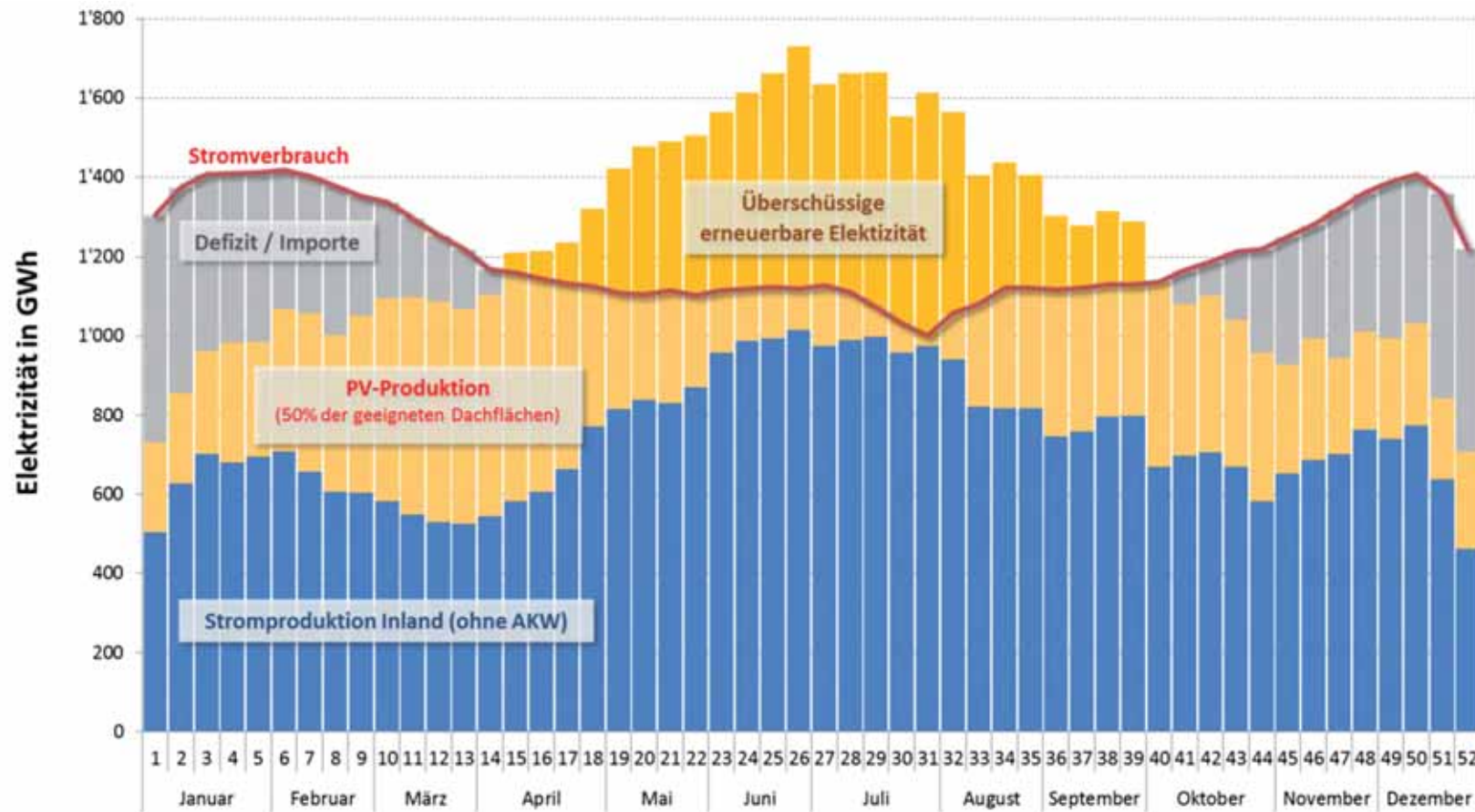
**Prof. Matthias Sulzer**  
Head SCCER FEED&D



**In cooperation with**

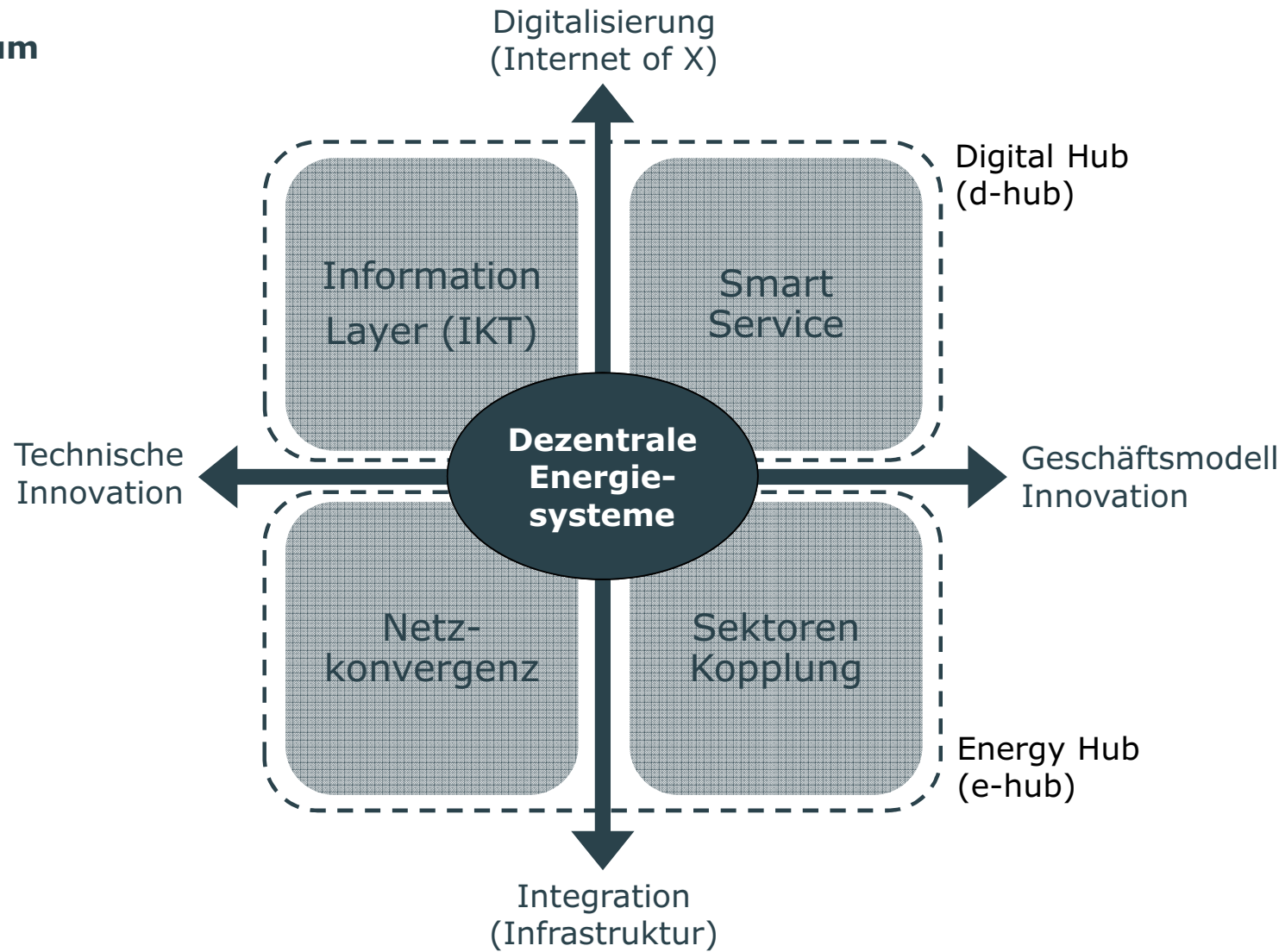


## Stromproduktion und Verbrauch CH, Swissgrid-Szenario „Sun2035“

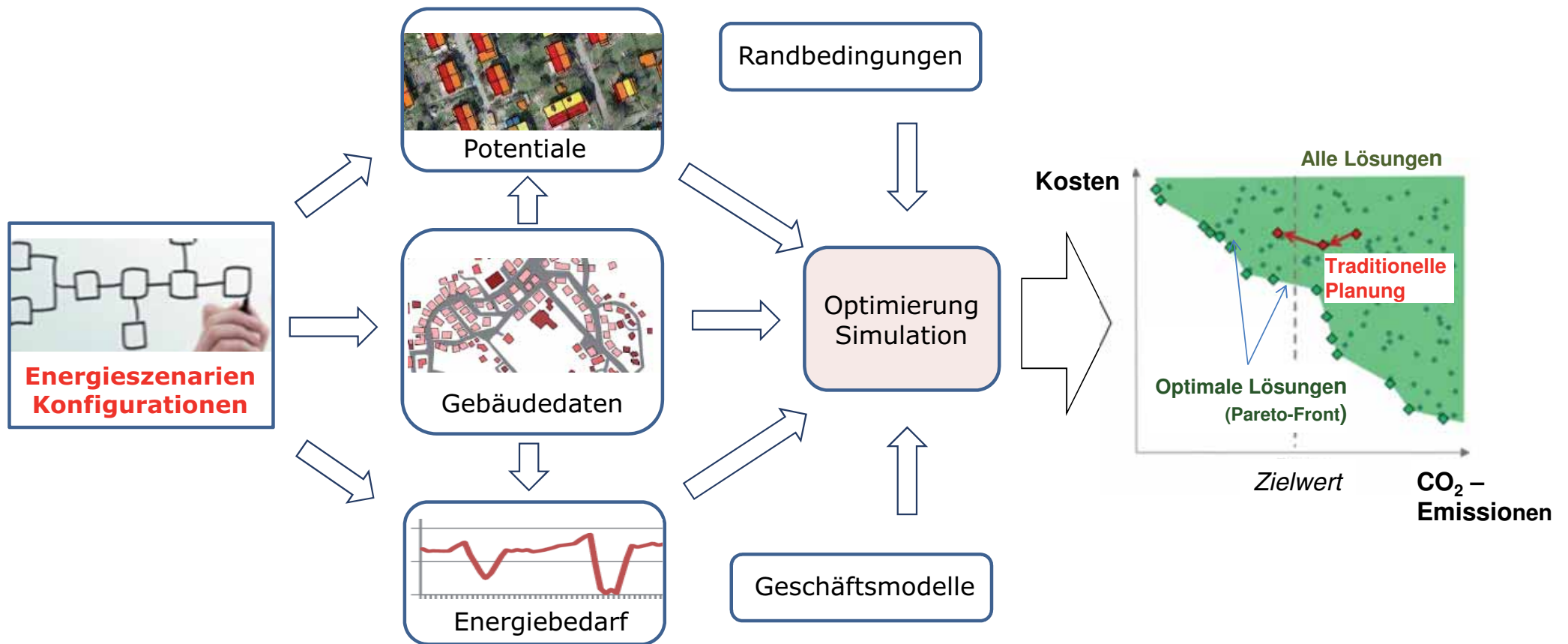


Quelle: Empa, UESL

# Lösungsraum

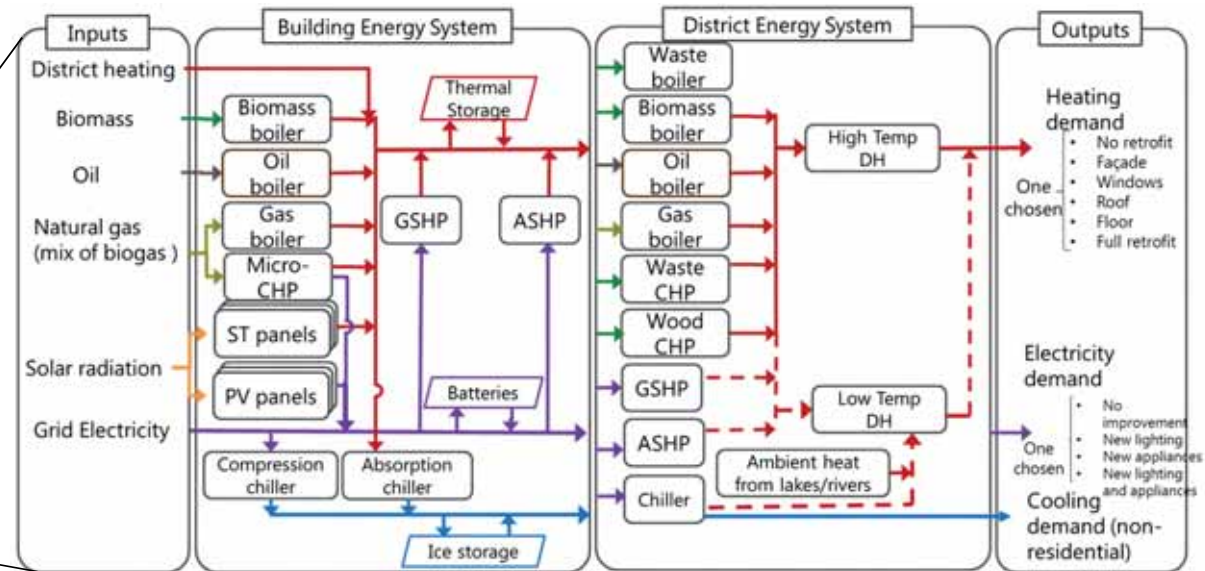
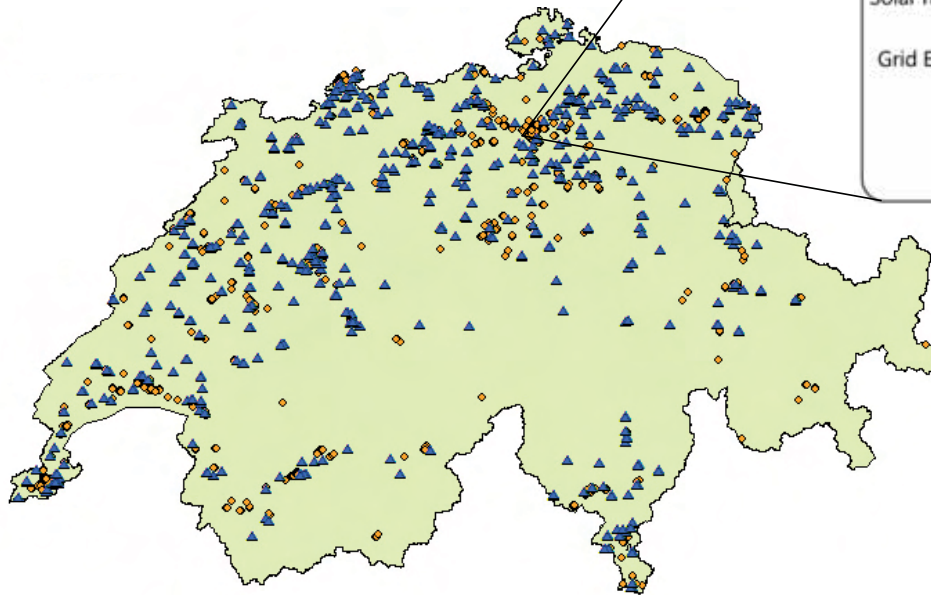


## Modellierung – Optimierung



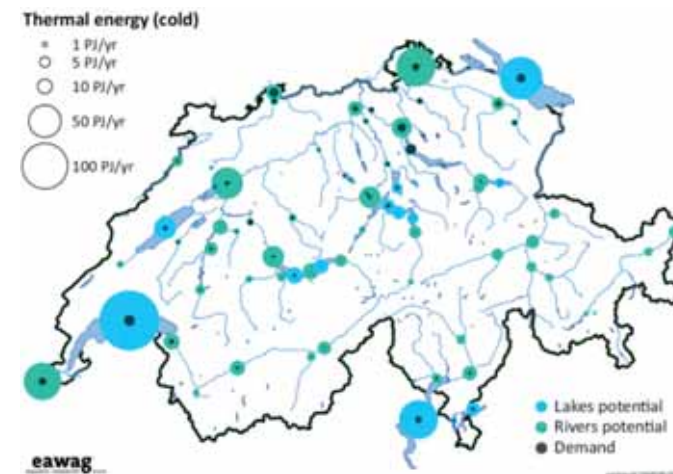
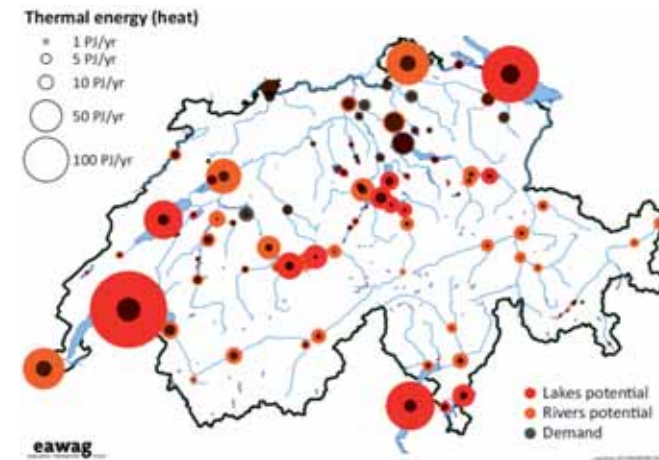
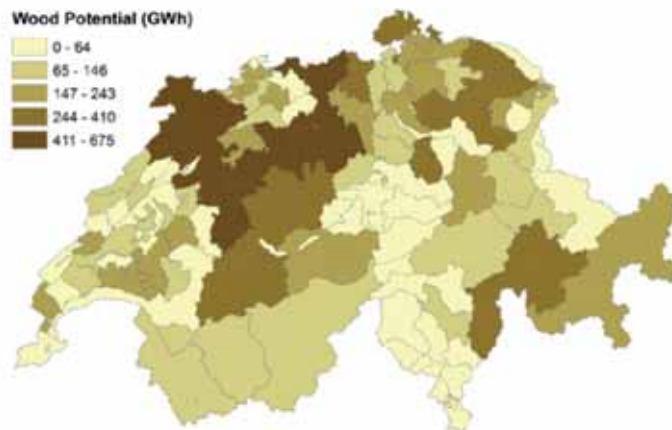
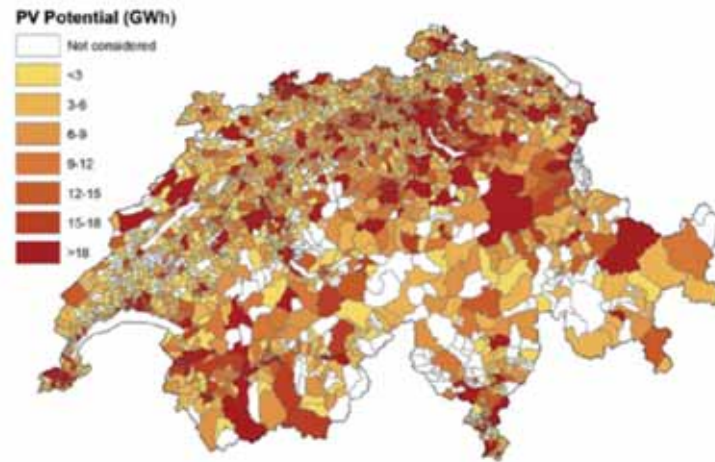
Quelle: Empa, UESL

# Gebäudeparkmodell



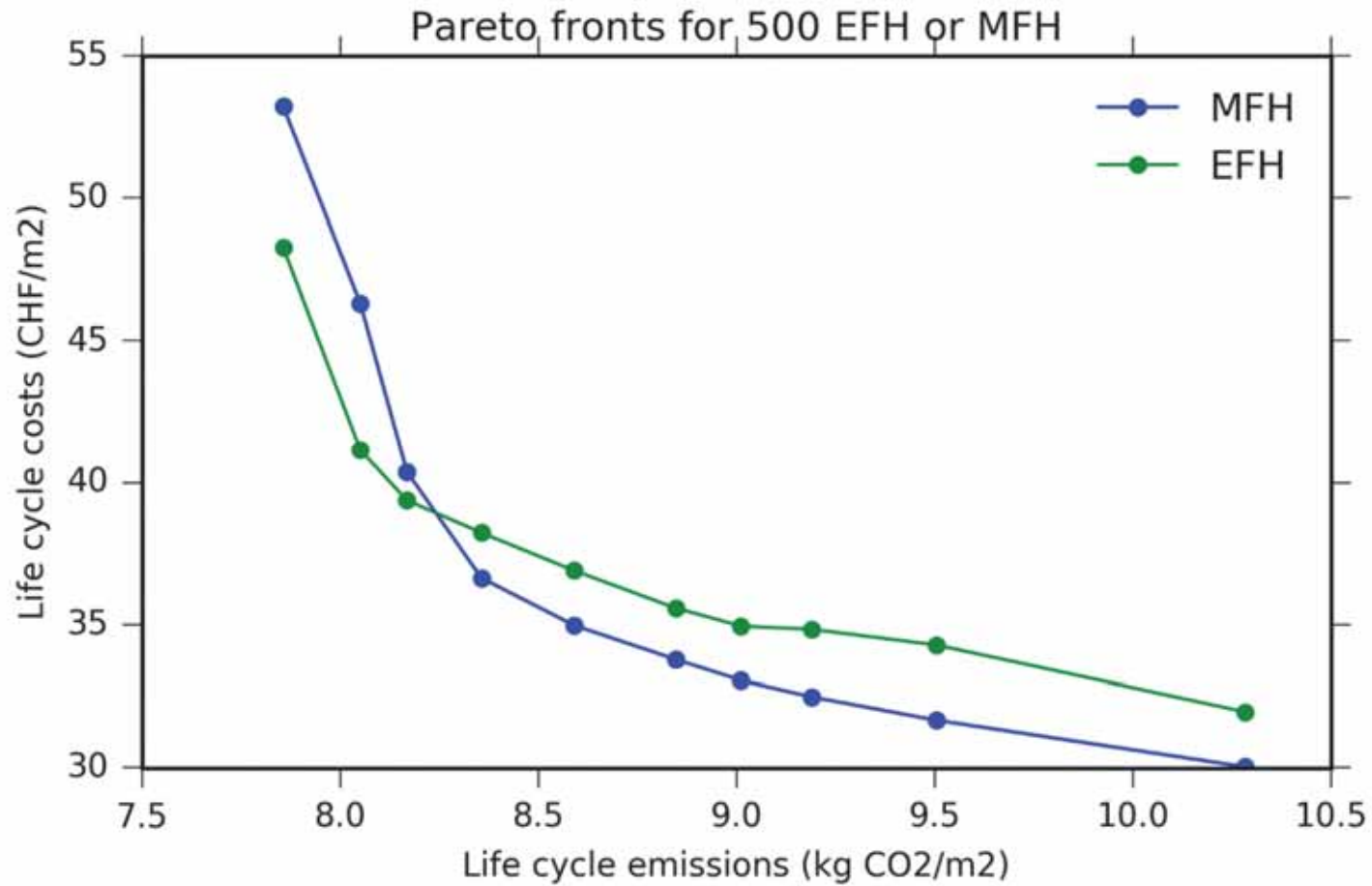
Quelle: Empa, UESL

## Potentialanalyse



Quelle: Empa, UESL

## Systemanalyse

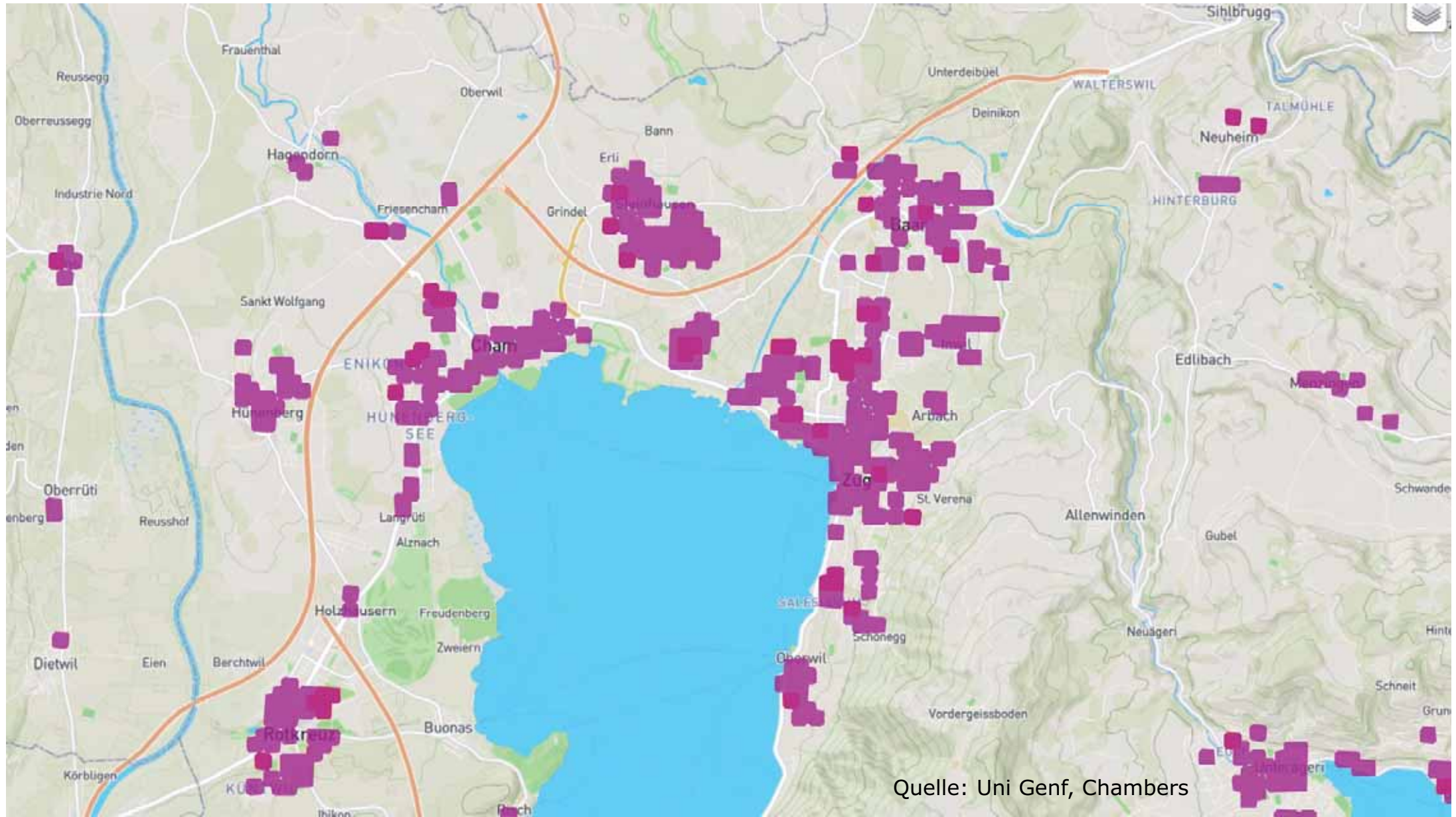


- Stufe Gebäude
- Stufe Quartier
- Stufe Stadt/Gemeinde
- Stufe Region
- Stufe Land

Quelle: Empa, UESL

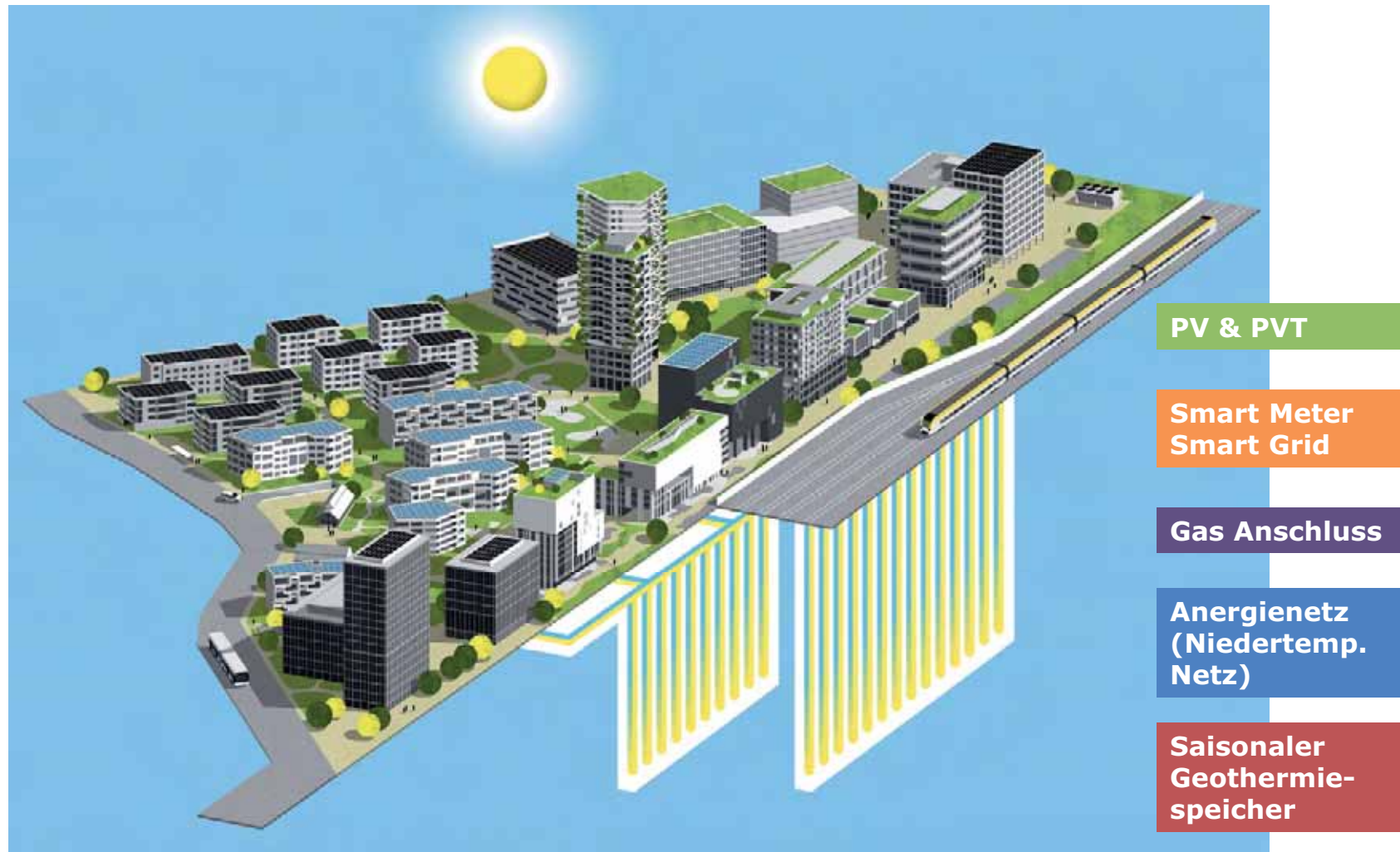






Areal Suurstoffi, Rotkreuz (Zug Estates)

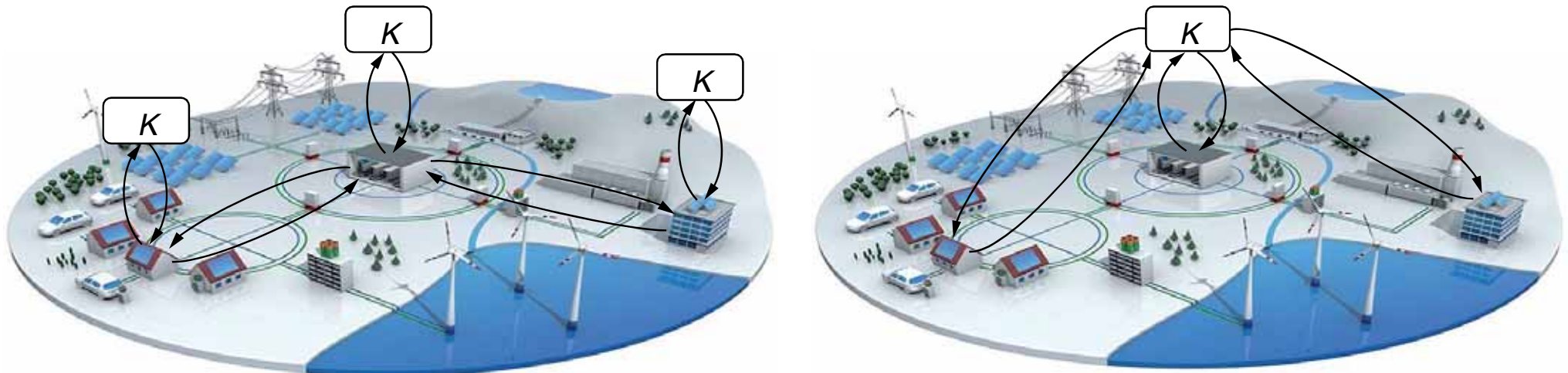




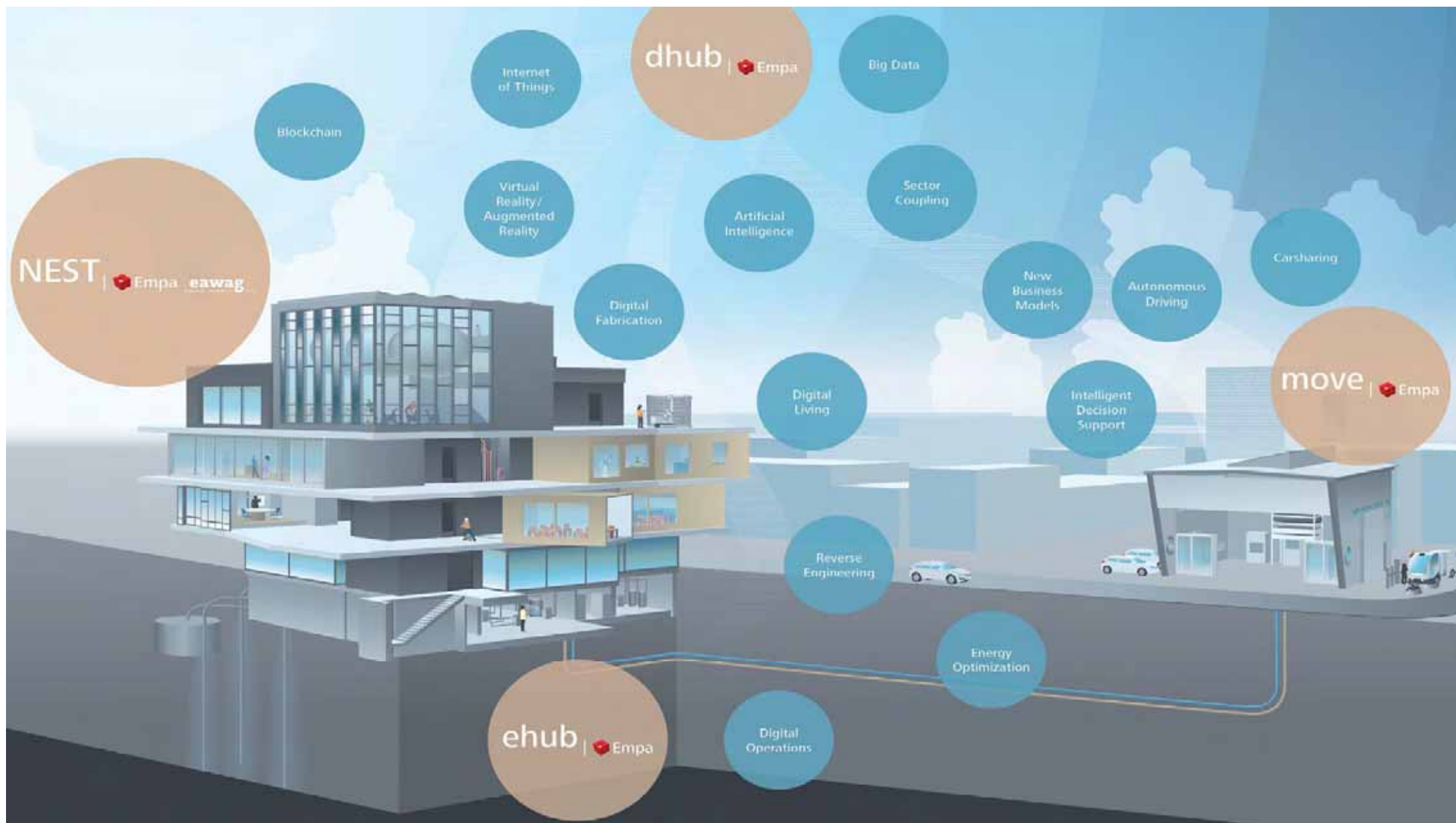
## Optimierung thermisches Netz



## Dezentrales Energiemanagement







**Dank an alle  
SCCER FEEB&D  
Partner**



**In cooperation with**



Schweizerische Eidgenossenschaft  
Confédération suisse  
Confederazione Svizzera  
Confederaziun svizra

Swiss Confederation

**Innosuisse – Swiss Innovation Agency**



## Academic partners



**ETH**

Eidgenössische Technische Hochschule Zürich  
Swiss Federal Institute of Technology Zurich



Lucerne University of  
Applied Sciences and Arts

**HOCHSCHULE  
LUZERN**

Engineering and Architecture  
FH Zentralschweiz



**sccer** | future energy efficient  
buildings & districts

### In cooperation with



Schweizerische Eidgenossenschaft  
Confédération suisse  
Confederazione Svizzera  
Confederaziun svizra

Swiss Confederation

**Innosuisse – Swiss Innovation Agency**